

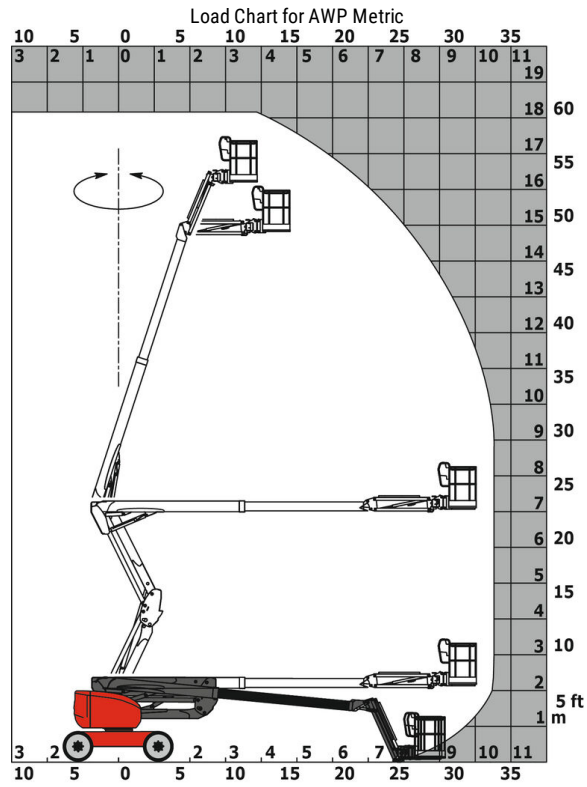
Technical sheet :

180 ATJ

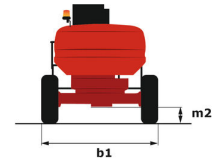
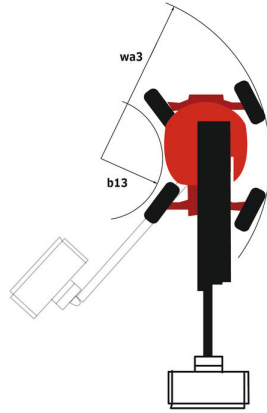
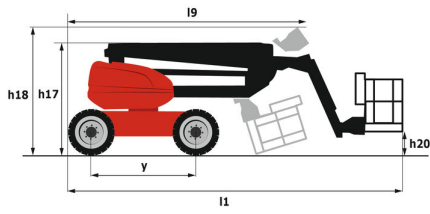


| Capacities | | Metric |
|---|---------|--|
| Working height | h21 | 18.19 m |
| Platform height | h7 | 16.19 m |
| Max. outreach | r1 | 10.51 m |
| Overhang | h31 | 7.55 m |
| Pendular arm rotation (bottom) | | +59.50 ° |
| Platform capacity | Q | 230 kg |
| Turret rotation | | 350 ° |
| Platform rotation (right / left) | | 90 ° / 90 ° |
| Number of people (inside / outside) | | 2 / 2 |
| Weight and dimensions | | |
| Platform weight* | | 7430 kg |
| Platform dimensions (length x width) | lp / ep | 1.80 m x 0.80 m |
| Overall width | b1 | 2.32 m |
| Overall length | l1 | 7.79 m |
| Overall height | h17 | 2.47 m |
| Overall length (stowed) | l9 | 5.56 m |
| Overall height (stowed) | h18 | 2.56 m |
| Floor height (access) | h20 | 0.40 m |
| Counterweight offset (turret at 90°) | a7 | 0.22 m |
| Internal turning radius (over tyres) | b13 | 1.38 m |
| External turning radius | Wa3 | 3.75 m |
| Ground clearance at centre of wheelbase | m2 | 0.40 m |
| Wheelbase | y | 2.20 m |
| Performances | | |
| Drive speed - stowed | | 5 km/h |
| Drive speed - raised | | 1 km/h |
| Gradeability | | 45 % |
| Permissible leveling | | 5 ° |
| Wheels | | |
| Tyres type | | Foam-filled |
| Drive wheels (front / rear) | | 2 / 2 |
| Steering wheels (front / rear) | | 2 / 2 |
| Braking wheels (front / rear) | | 0 / 2 |
| Engine/Battery | | |
| Engine brand / model | | Kubota - D1105-E4B - D1105-E4B |
| Engine norm | | Interim Tier 4, Stage IIIA, Stage V |
| I.C. Engine power rating / Power (kW) | | 24.80 Hp / 18.50 kW |
| Miscellaneous | | |
| Ground Pressure | | 10 daN/cm ² |
| Hydraulic Pressure | | 340 bar |
| Hydraulic tank capacity | | 54 l |
| Fuel tank | | 52 l |
| Vibration on hands/arms | | < 0 m/s ² |
| Daily consumption ** | | 4.26 l |
| Standards compliance | | |
| This machine is in compliance with: | | European directives: 2006/42/EC- Machinery (revised EN280:2013) - 2004/108/EC (EMC) - 2006/95/EC (Low voltage) |

Load chart



Dimensional drawing



Equipment

Standard

220V predisposition in the platform
4 simultaneous movements
4 wheel drive
4 wheel steer with crab mode
Audible alarm and illuminated indicator lamp (leveling, overload, lowering)
Backup electrical pump
Basket 1,800 mm
CAN bus technology
Differential locking on rear axle
Easy Manager
Emergency stop button in platform and on frame
Fuel gauge with low level indicator
Fully galvanized basket with demountable floor
Hour meter
Leveling unlocking
Load sensing pump
Operator presence pedal
Oscillating front axle
Rear axle with limited slip differential
Steer and rotate
Stop & Go system

Optional

Air predisposition
Battery charger
Battery cut-off
Beep on every movement
Beep upon travel
Biodegradable oil
Coded anti-start
Continuous turret rotation
Exhaust line protection, spark arrester and fume reduction system
Extreme cold oil
Fully galvanized basket 1800mm with lateral door
Galvanized basket 2,100 mm
Highly capacity battery
Lockable fuel cap
Onboard generator (3,5 or 5 kW)
Personalized paintwork
SPS : Secondary protection system
Safety harness
Spark arrester
Water heater
Water predisposition
Working light



Siège Social

430 rue de l'Aubinière - 44150 Ancenis Cedex - France

Tel: +33(0)2 40 09 10 11 - Fax: +33 (0)2 40 09 10 97

www.manitou.com



This brochure describes versions and configuration options for Manitou products which may be fitted with different equipment. The equipment described in this brochure may be standard, optional or not available depending on version. Manitou reserves the right to change the specifications shown and described at any time and without prior warning. The manufacturer is not liable for the specifications given. For more information, contact your Manitou dealer. Non-contractual document. Product descriptions may differ from actual products. List of specifications is not comprehensive. The logos and visual identity of the company are the property of Manitou and may not be used without authorisation. All rights reserved. The photos and diagrams contained in this brochure are provided for information only.

MANITOU BF SA - Limited company with board of directors - Share capital: 39,668,399 euros - 857 802 508 RCS Nantes